



LorikPublisher®

Page layout and hardcopy publication

LorikPublisher is the product in the Lorik-Software range that is intended to manage the paper edition of data produced by Dry and Cirrus.

It includes all the most standard export formats, vector (Post-Script/EPS or PDF) or raster (Tiff, PS or PDF), and allowing direct printing to any connected printer.

LorikPublisher also includes advanced layout tools and allowing the creation of models, to import and change the graphical aspect of data originating from Dry or Cirrus files.

LorikPublisher integrates all drawing, text and symbol deposit functions available in Dry or Cirrus. It also uses the same graphical template system.

LorikPublisher is aimed at laying out and finalising data originating from programs of the LorikSoftware range for hardcopy publishing

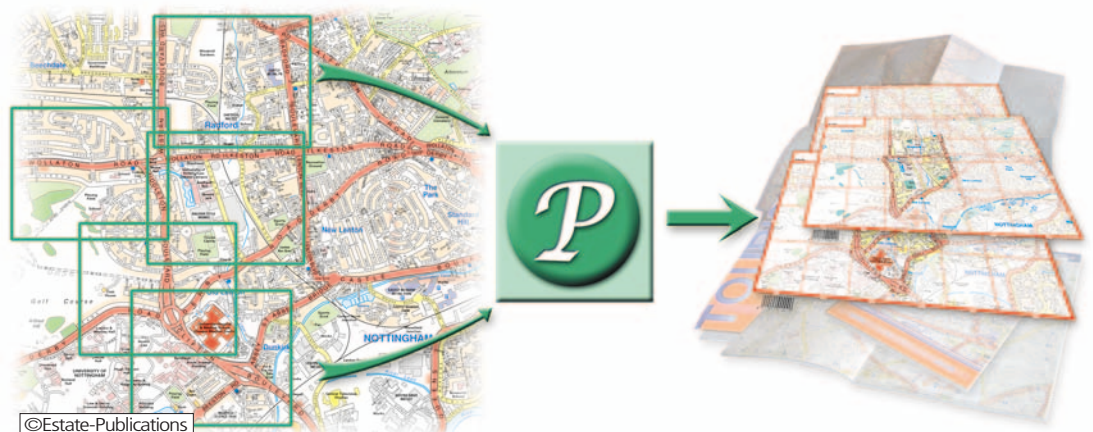
LorikPublisher includes a set of functions designed to optimize the creation of any cartographic project (atlas, maps, etc.) whatever the envisaged method of final printing (digital or conventional). Its power lies in its capacity to generate several pages of different aspect and scale from a unique file.

LorikPublisher imports data originating from several files and fits them to a scale or a given dimension. All information of placement, scale and graphic aspect can be saved within models, so allowing automatic creation of pages. Because it includes all drawing functions of Dry and Cirrus, LorikPublisher allows the modifications of the imported data to that of the desired result and at the same time add new margin or layout information.

LorikPublisher incorporates a batch system allowing the launch and ability to chain export

operations. For each file you can define the type of export you need (films, CMYK, Tiff, PostScript and PDF). An advanced management of the exported films allows you to separate and to combine colours, to create mask films, to manage the transparency, etc.

Dry and Cirrus offers the facility to carry out dynamic extractions using a single file called reference file. Extractions keep a link with their file of origin. Thus during an update, if vectorial entities or texts are added, modified or deleted, these modifications are reflected in all extractions automatically. This automatic updating function proves particularly useful for extractions with recovery zones or for multi-product management. LorikPublisher imports data stemming from files Dry or Cirrus by using these dynamic extractions. Thus during modifications or during updates, only the reference file requires an intervention.



©Estate-Publications

ERGONOMIC INTERFACE

LorikPublisher proposes an optimized interface and working environment:

- Tools are available in the form of toolbars. These toolbars can be moved and their position saved.
- The graphical template is accessible by a drop-down menu or in the form of a tab panel.
- Tools such as the monitor, the functions of zoom and the texts search allow to browse quickly in the file.
- A ruler, visual marks and functions of alignment allow a precise positioning of objects.

MULTI-PRODUCTS MANAGEMENT

LorikPublisher allows the import of several extractions from different reference files. It is also possible to intervene within the extraction in order to arrange their contents. Each extraction has its own graphical template. Thus, it is possible to modify the graphical aspect of an extraction without altering the other one and to mask or display layers. You can so generate several maps according to the appearance of elements and levels of information you want to display. All these modifications are local and stored in the LorikPublisher file and do not affect the reference file.

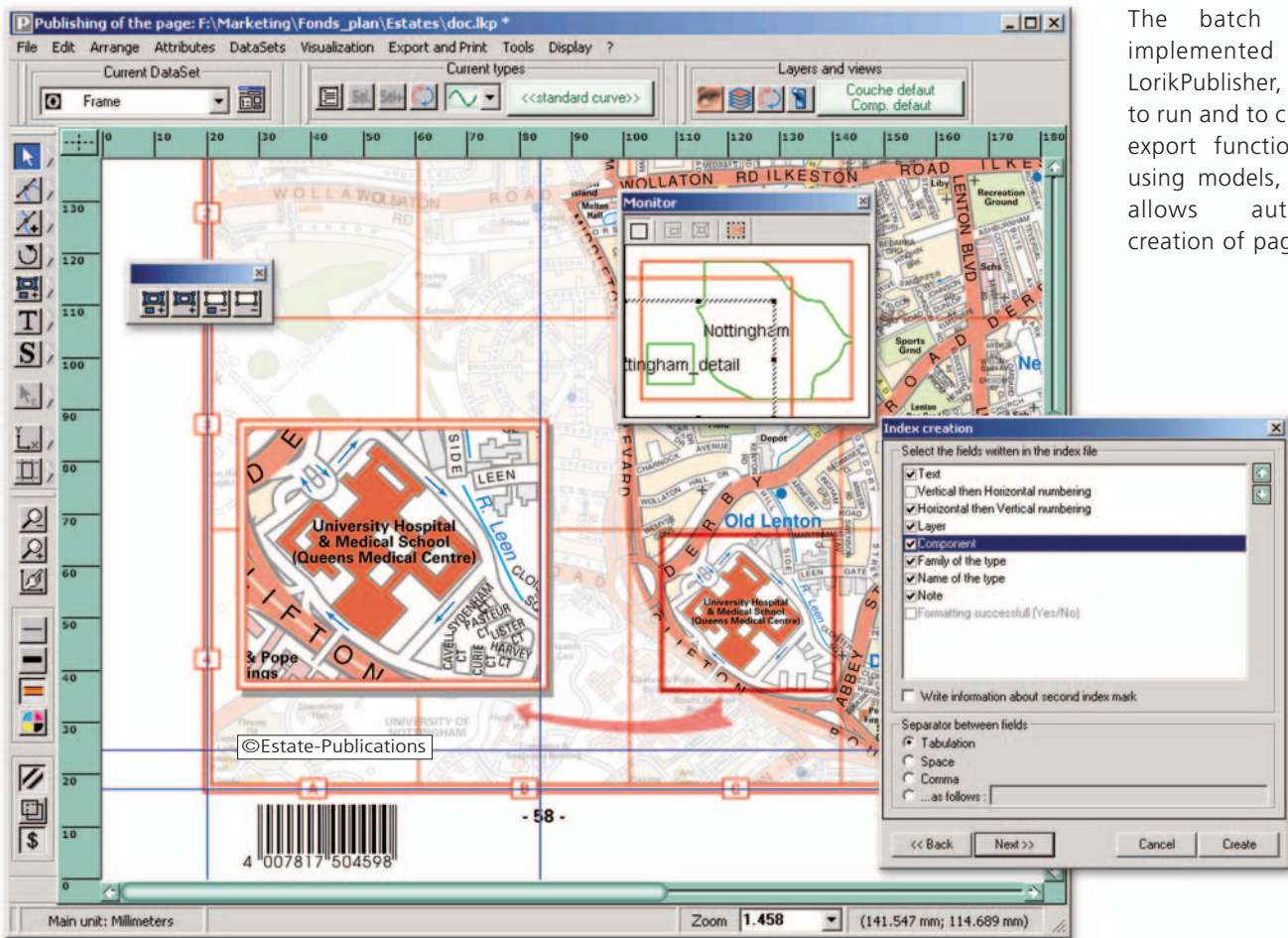
ADVANCED LAYOUT FUNCTIONS

Information is added to enrich the map. You can insert a bar code, generate and draw grids of any type automatically, generate indexes for texts or symbols, place a Tiff image, etc.

A system of variables allows the setting of the various texts related to the page to be created: title, scale, page numbers, etc., by typing directly a value or by reading a pre-existing standard text file.

BATCH MODE

The batch mode, implemented in LorikPublisher, allows to run and to chain all export functions. By using models, it also allows automatic creation of pages.



FEATURES

- Data Import of Dry or Cirrus formats.
- Import from several reference files.
- Import of images integrated in final outputs.
- Multi-extractions management.
- Local modifications of extractions.
- Anti-aliasing function.
- Bar code management.
- International characters management.
- Automatic grids drawing.
- Creation of reference indexes for texts and point-symbols.
- Management of bleeding edges.
- Transparency and knockout management.
- Advanced management of films creation.
- Printing allowed on any printer types.
- 3 raster output formats: PS, Tiff and PDF.
- 2 vector output formats: EPS and PDF.
- Colours or films export.
- Automatic CMYK separation.
- Automatic pages creation using a script language and the variables system.